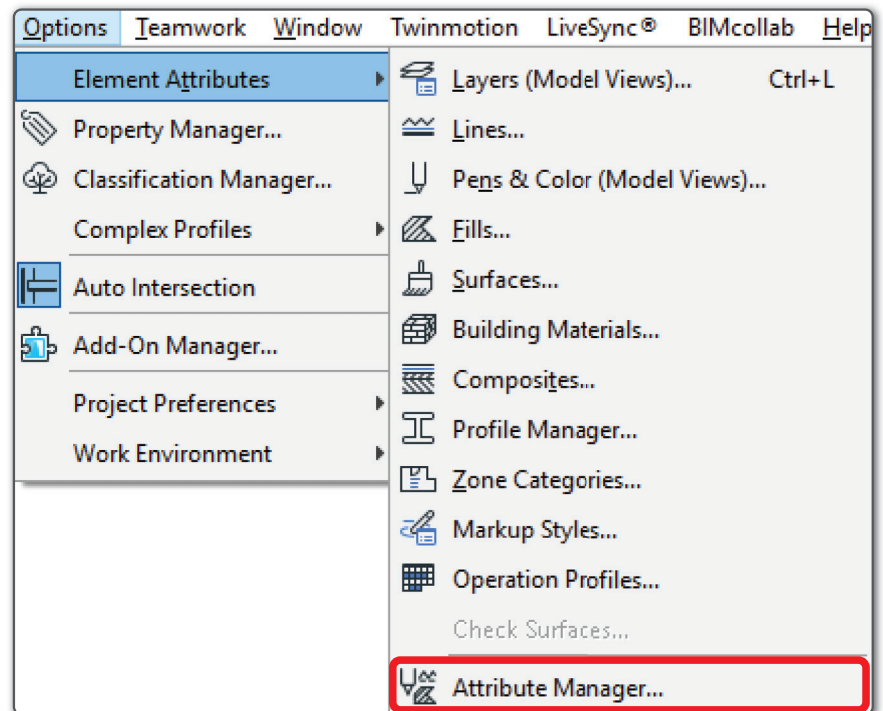


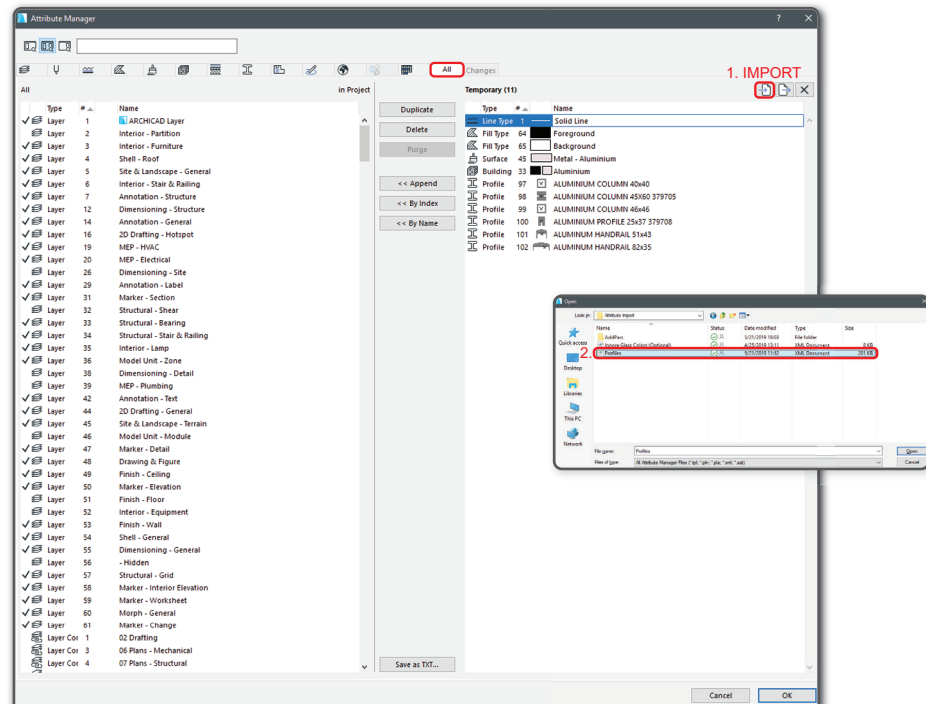
STEP 1

Import ArchiCAD Attributes. Attributes can be imported via "Options - Element Attributes - Attribute Manager"



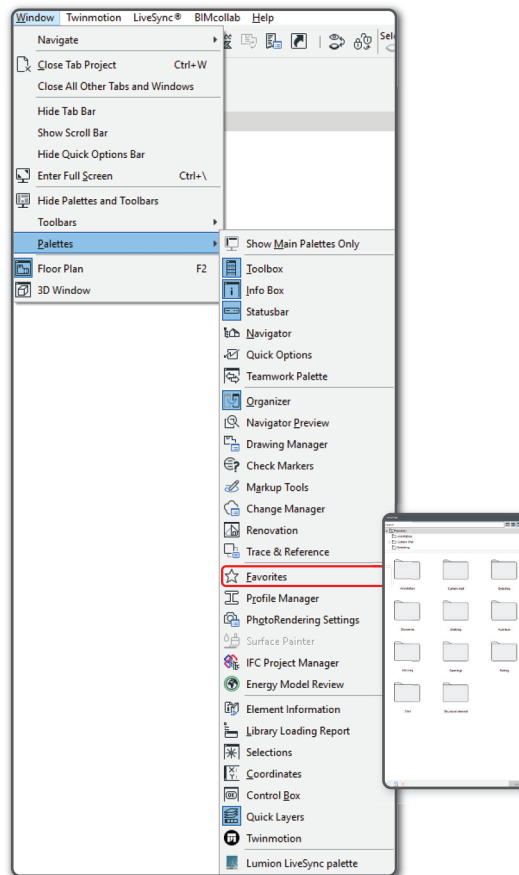
STEP 2

Choose "All", select Import from top right corner and then navigate to folder "RFix railing ... - Attribute Import" and select RFixRailingProfiles.xml file. Select all imported elements and merge attributes via "by Index".



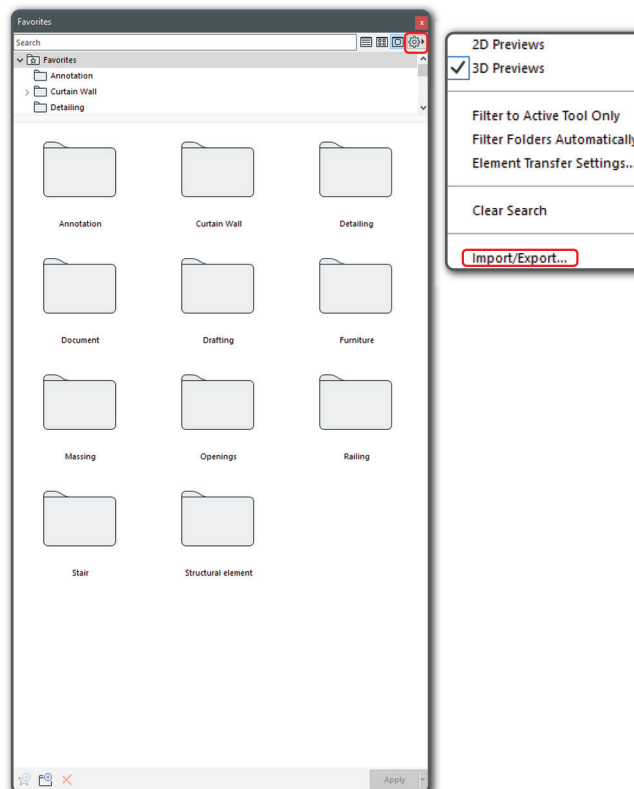
STEP 3

Import ArchiCAD Favorites. Favorites can be imported via "Window - Palettes - Favorites". A window will pop up.



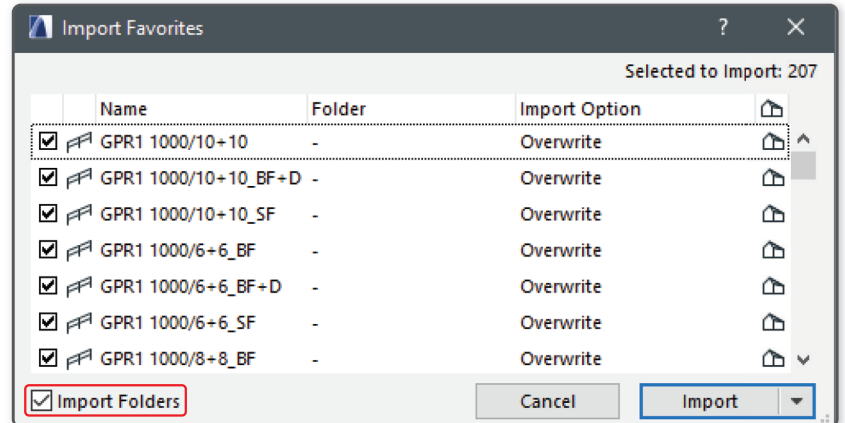
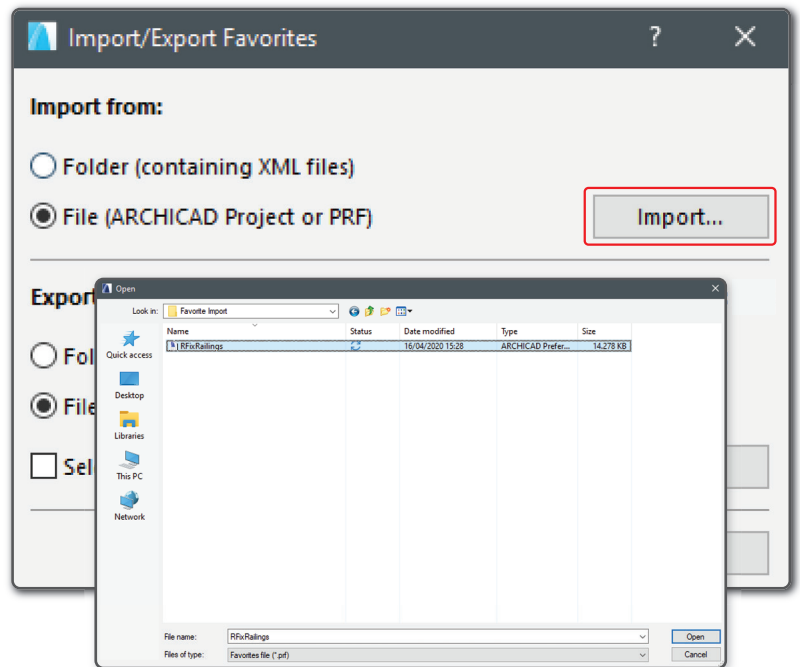
STEP 4

In the right upper corner click the gear icon, then please select Import/Export.



STEP 5

From new popup window, select import from "File", hit Import, navigate to folder "RFix railings ... - Favorite Import" select the single file. Check the Import with Folders box.

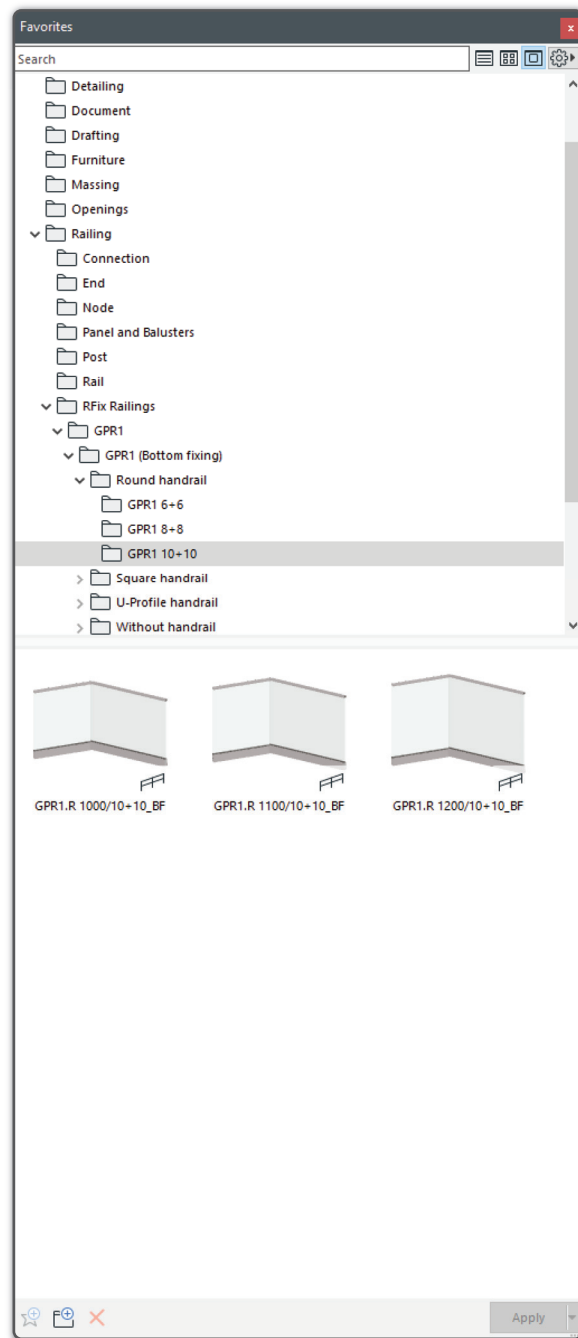


STEP 6

To import Ral Color system into ArchiCAD follow this instruction.

<https://helpcenter.graphisoft.com/knowledgebase/64539/>

FINISHED IMPORT



NOTE: These presets work only with ArchiCAD 23 default template and Estonian ArchiCAD 23 RKAS template

All should be good now if instruction were followed! Enjoy ArchiCAD predefined railings from RFix!

For more information please check out Manual folder, there are links to instructions!